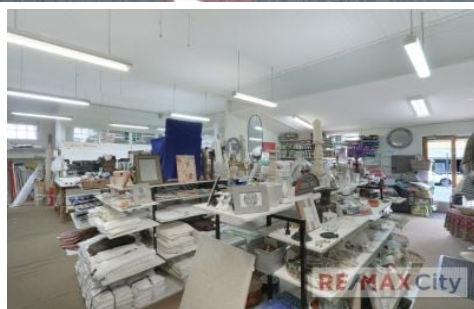


RE/MAX City



293 Given Terrace Paddington QLD

4 🚗

An opportunity to be in one of Paddington's central locations! Situated at the intersection of Given and Latrobe Terrace, this tenancy is a rare chance to be in a high profile location.

- 203m2 approx. plus storage areas
- Predominately open plan space with separate rooms at rear
- Air conditioned
- 4+ onsite car parks with rear access
- Excellent signage/branding exposure to Given and Latrobe Terrace

Located just 2km from the CBD, It is set in the heart of the retail / dining precinct that Paddington has to offer. Suncorp Stadium, inner City Bypass and Milton road are all within close proximity.

Price : CONTACT EXCLUSIVE AGENT
Building Size : 203 sqm
View : <https://www.remaxcity.com.au/lease/qld/city-north/paddington/commercial/retail/5637686>

RE/MAX
COMMERCIAL

Chris Esdale
07 3181 8888

<https://www.remaxcity.com.au>