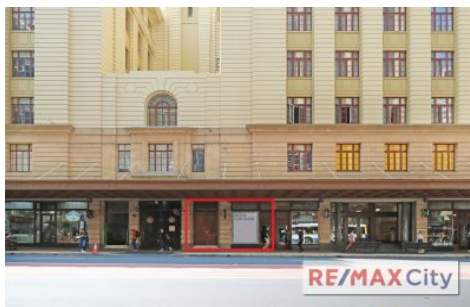
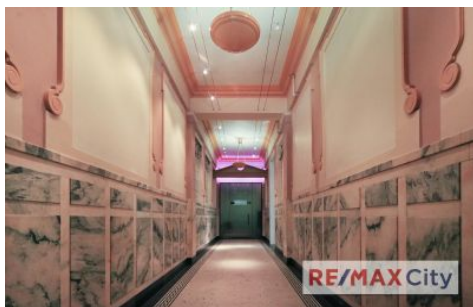


RE/MAX City



6/208 Adelaide Street Brisbane City QLD

RE/MAX City presents this rare opportunity to lease in the iconic ANZAC Square Building located on Adelaide Street.

- 103m2 ground floor tenancy (potential for sub division)
- Great exposure with strong foot traffic
- High Ceilings, Timber Flooring, Heritage Building
- Air conditioned
- Highly sought after CBD location

This well positioned property benefits from close by public transport including the Central Train Station and Adelaide Street bus stops. Surrounded by established retail tenants and corporate offices, this is a chance to secure a prime location for your business.

Please contact Marketing Agent Chris Esdale for further information and to schedule your inspection.

View : <https://www.remaxcity.com.au/lease/qld/city-north/brisbane-city/commercial/retail/5640431>



Chris Esdale
07 3181 8888