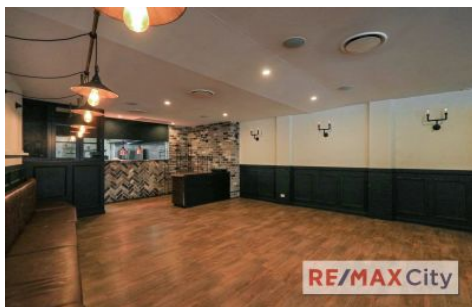


# RE/MAX City



## 6/165 Baroona Road Paddington QLD

Located in the tightly held Rosalie precinct the site offers a rare opportunity to secure a fully fitted out tenancy.

Featuring an bar/restaurant fit out and positioned amongst well known established businesses, this property offers an exceptional opportunity for you to take advantage of the existing infrastructure in place.

- 127m2 with exclusive use outdoor dining area plus footpath dining (STCA)
- 1 exclusive use car park with storage room in basement
- Fully fitted out restaurant / bar
- Liquor Licence available
- Ample customer parking onsite
- Prominent, elevated corner position

With an East facing aspect the site benefits from its high

**Building Size** : 127 sqm

**View** : <https://www.remaxcity.com.au/lease/qld/city-north/paddington/commercial/retail/5641449>



**Chris Esdale**  
07 3181 8888



**Geoff Esdale**  
07 3181 8888

<https://www.remaxcity.com.au>