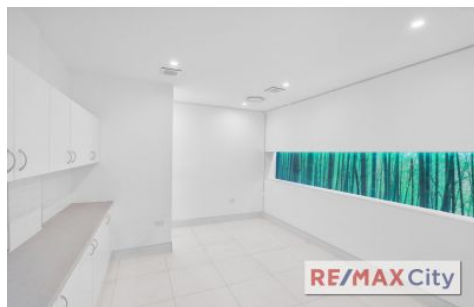


RE/MAX City



Shop 3/309 Logan Road Stones Corner QLD

This property features great exposure and signage on Logan road at a competitive rate.

- 40m² NLA
- Front reception / open plan space with storage
- Glass frontage with air conditioning
- Staff room and kitchenette
- Great signage and exposure

Located only 4 km from Brisbane CBD, Stones Corner has a trendy hub of retail shops and commercial offices. It has excellent access to public transport including bus and train. Stones Corner also is perfect to connect easy access to all arterials including South East Freeway, Clem 7, Airport Link and Gateway Motorway.

Please contact the Exclusive Marketing agents Chris and

Building Size : 40 sqm
View : <https://www.remaxcity.com.au/lease/qld/inner-south/stones-corner/commercial/re tail/5700327>

RE/MAX
COMMERCIAL

RE/MAX
COMMERCIAL

Chris Esdale
07 3181 8888

Geoff Esdale
07 3181 8888

<https://www.remaxcity.com.au>