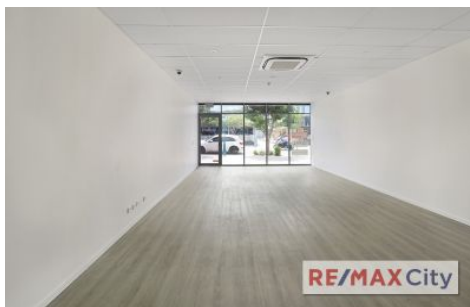


RE/MAX City



104/640 Oxley Road Corinda QLD

Located at 640 Oxley Road, Corinda. Perfectly positioned in the heart of Corinda's popular retail and office precinct, surrounded by cafes and a variety of other small businesses, approximately 8.8km Southwest of the Brisbane CBD. On offer is excellent signage opportunities on a busy street front with competitive rent.

- * 64m²* retail
- * Floor to ceiling glass frontage
- * Competitive rent
- * Kitchenette, internal air-conditioning & security system
- * Ideal for beauty/retail/office/medical or food/beverage - outdoor dining available
- * 1 car park included in rent
- * Access to grease trap
- * Available immediately - Join the village now!

Building Size : 64 sqm
View : <https://www.remaxcity.com.au/lease/qld/southside/corinda/commercial/retail/5708955>



Geoff Esdale
07 3181 8888



Chris Esdale
07 3181 8888