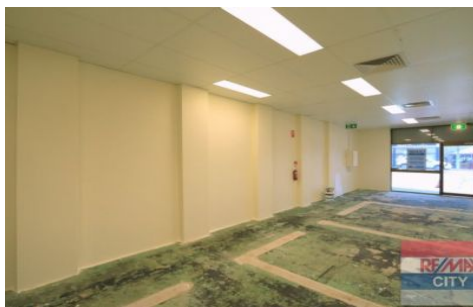


# RE/MAX City



### 3 / 643 Wynnum Road Morningside QLD

Prominently positioned on busy Wynnum Road inbound to the CBD. This is your chance to move into a entry level retail / office. With outstanding signage opportunities and featuring parking onsite, this is not to be missed.

- \* 63m2 approx.
- \* Glass Frontage
- \* Onsite parking at rear
- \* Busy commercial strip
- \* Owner will consider all uses for the property
- \* Kitchenette / Shared amenities

Morningside is located 5kms to the East of the CBD and neighbours the suburbs of Hawthorne, Bulimba and Norman Park. The suburb is well serviced by public transport, schools and amenities. Take advantage of this fast growing and densely populated inner east suburb.

**Building Size** : 63 sqm  
**View** : <https://www.remaxcity.com.au/lease/qld/inner-south/morningside/commercial/retail/5729176>

**RE/MAX**  
COMMERCIAL

**Chris Esdale**  
**07 3181 8888**

<https://www.remaxcity.com.au>