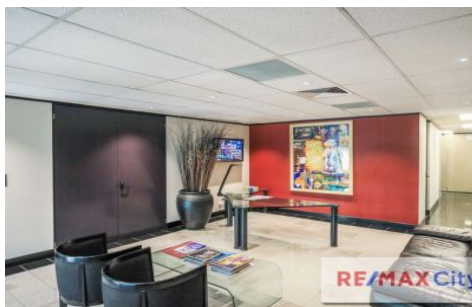


# RE/MAX City



## 32 Logan Road Woolloongabba QLD

32 Logan Road is a modern two storey commercial office building situated on a corner block surrounded by landscaped gardens. It offers excellent street exposure and presents the opportunity to sub-lease.

- 125m<sup>2</sup> NLA (sub-lease opportunity)
- 3 partitioned offices
- Open plan office with desks already in place
- Communal reception/waiting area and board room
- Kitchenette
- Shared male and female amenities
- 3 secure car parks at \$157.33 Per month

The property is prominently located on the corner of Logan Road, just 2km south of the Brisbane CBD. 32 Logan Road is well serviced by a range of amenity in the immediate area including the Logan Road Cafe/Dining Strip, The

**Building Size** : 125 sqm  
**View** : <https://www.remaxcity.com.au/lease/qld/inner-south/woolloongabba/commercial/offices/5729198>



**Geoff Esdale**  
**07 3181 8888**