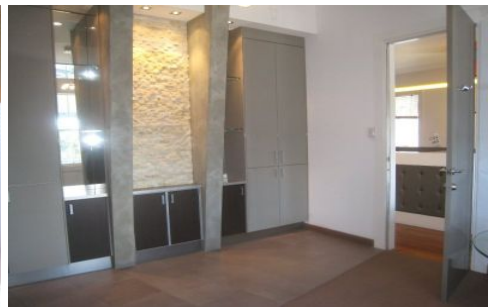


# RE/MAX City



## 1/49 James Street FORTITUDE VALLEY QLD

Prime exposure, positioned on the corner of James and Robertson Street - this is a rare offering that must not be overlooked!

First floor tenancy with a sizable 146m<sup>2</sup> of space - fitted out and ready to go!

High ceilings and polished floors are part of the charm and character of the property.

Located in the heart of a vibrant, lively hub of food and retail outlets and within close proximity to business services, major banks, cafes, restaurants and public transport facilities.

This offering will not last - call Geoff Esdale to inspect TODAY!

**Building Size** : 146 sqm  
**View** : <https://www.remaxcity.com.au/lease/qld/city-north/fortitude-valley/commercial/offices/5729231>



**Geoff Esdale**  
**07 3181 8888**