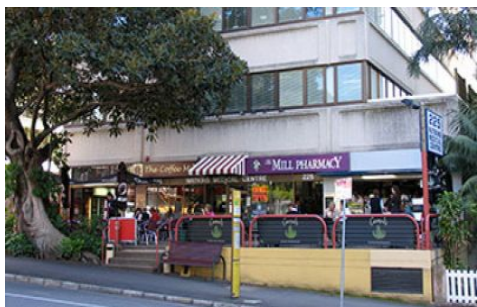


# RE/MAX City



- Enjoy expansive city views and beyond from this top floor office suite in Spring Hill
- Central location on the city fringe
- Suit a wide range of professionals
- Suite comprises of 2 consulting rooms, large reception and waiting area small kitchenette and plenty of storage space
- Building has lobby with chemist and 2 cafes
- Lift access, bathroom amenities on the same level
- 2 car parks available for \$350 each per month

**Building Size** : 96 sqm  
**View** : <https://www.remaxcity.com.au/lease/qld/city-north/spring-hill/commercial/healthcare/5729244>



**Geoff Esdale**  
**07 3181 8888**