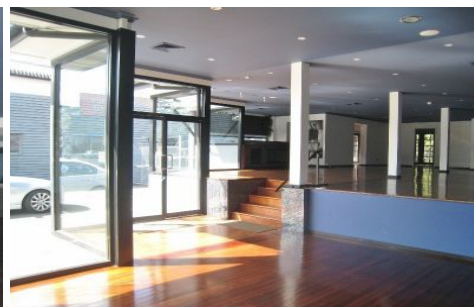


RE/MAX City



Located on one of Brisbane's busiest roads, this outstanding freestanding building can be transformed to meet your specific requirements. With plenty of glass and polished timber floors the tenancy absorbs heaps of natural light and creates a very pleasant environment to work in.

The showroom features a split level layout comprising of large open plan area, 2 offices and built-in kitchen that would suit a variety of professionals and businesses.

- * 306m²
- * Main road exposure / great signage opportunities.
- * 9 Car parks / Wheelchair access
- * Air conditioned / security system
- * Downstairs / kitchenette / toilet / office / storage
- * Attractive rent

Building Size : 306 sqm
View : <https://www.remaxcity.com.au/lease/qld/inner-south/annerley/commercial/retail/5729250>

RE/MAX
COMMERCIAL

Geoff Esdale
07 3181 8888

Only minutes from the Brisbane CBD, major arterials and

<https://www.remaxcity.com.au>