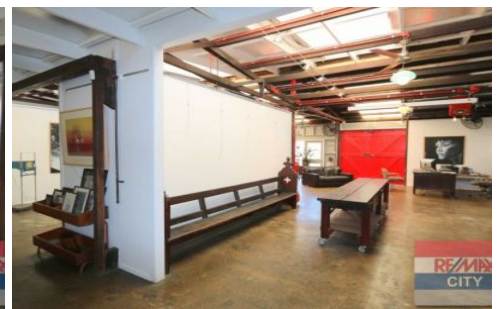


# RE/MAX City



Enjoy Old world character and the convenience of modern technology thoughtfully blended into one creative space. The property has a funky and polished industrial feel and offers a selection of open plan areas with polished concrete floors, exposed beams and high ceilings.

Positioned in a quiet street and set in idyllic surrounds this is one property not to be missed.

- \* 155m2 approx.
- \* 5 car parks onsite plus plenty of off street parking
- \* Opportunity to live and work from home
- \* Self-contained with shower
- \* Open plan areas
- \* 3 phase power
- \* Character features including original exposed beams, barn doors and more

**Building Size** : 155 sqm  
**Land Size** : 392 sqm  
**View** : <https://www.remaxcity.com.au/lease/qld/inner-south/annerley/commercial/offices/5729292>

**RE/MAX**  
COMMERCIAL

**Geoff Esdale**  
07 3181 8888

<https://www.remaxcity.com.au>