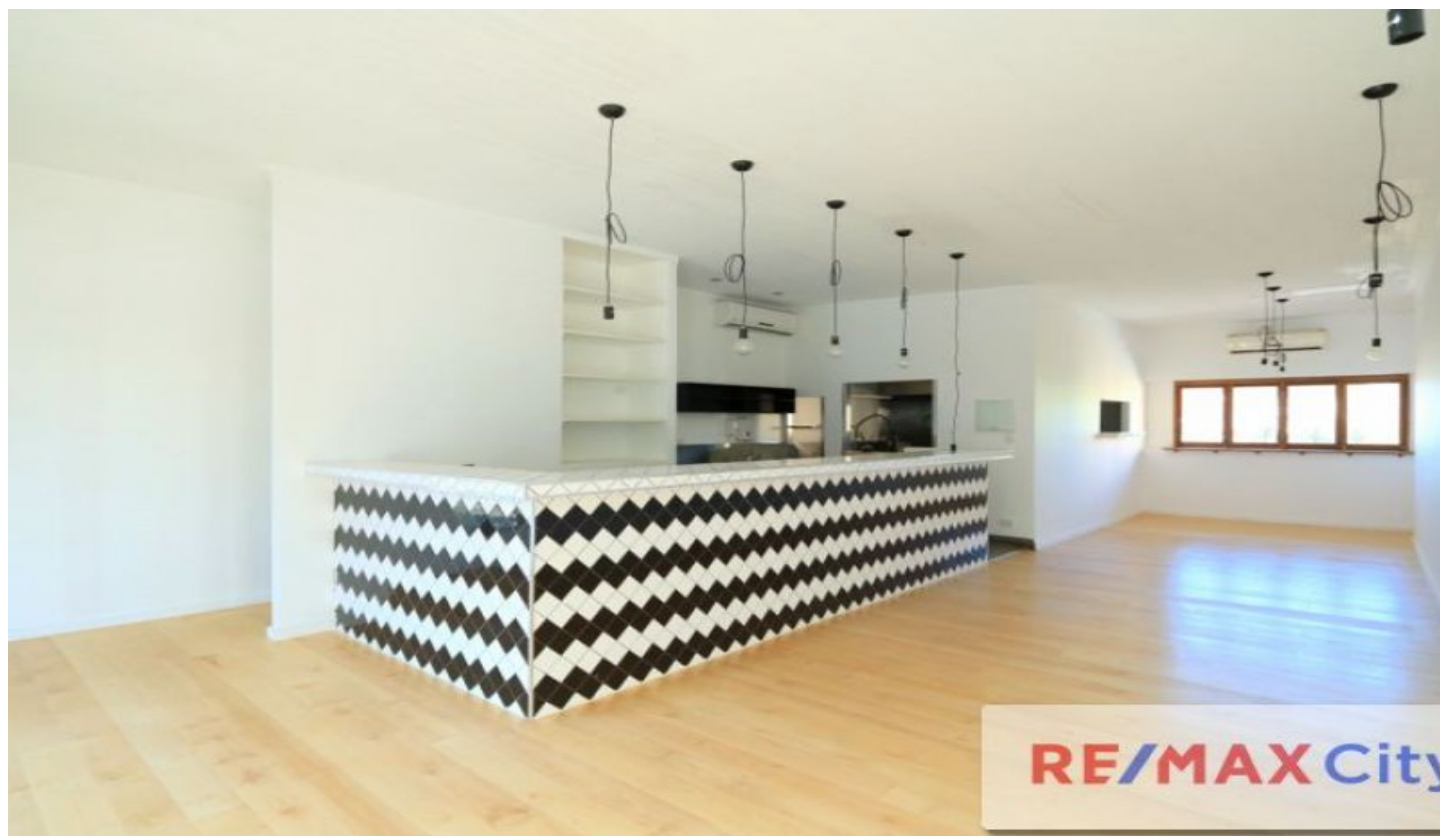


RE/MAX City



SHOP A / 2 Given Terrace Paddington QLD

- * 113m2 (approx.) over 2 levels plus additional 52m2 available*
- * Footpath dining (STCA)
- * Partial fit out in place
- * Timber Floors, High Ceilings
- * Signage / exposure
- * Self contained

Paddington is only 2kms to the CBD and benefits from excellent local amenities, access to major arterials and public transport. With a wide range of businesses in the area and in close proximity to Suncorp Stadium, Caxton Street and The Barracks.

Please call Geoff or Chris Esdale for further information and to schedule your inspection.

Building Size : 113 sqm
View : <https://www.remaxcity.com.au/lease/qld/city-north/paddington/commercial/retail/5729293>

RE/MAX
COMMERCIAL

Geoff Esdale
07 3181 8888