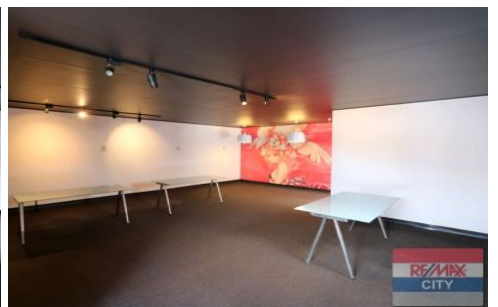
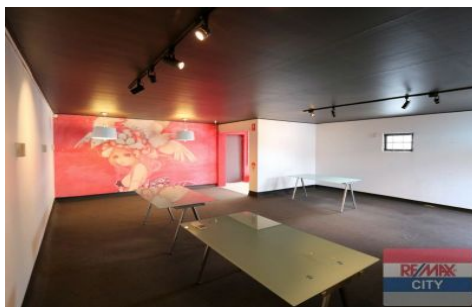


RE/MAX City



1/210 Days Road Grange QLD

Great creative / office space in the heart of the Grange.

- * 54m2 approx.
- * Ample onsite client parking
- * Suit variety of businesses
- * Competitive rate on offer

Within close proximity to Wilston cafe & dining precinct, public transport and local amenities. Only 5kms to the CBD and with direct access to major arterial roads.

Please call Joe D'Ercole or Geoff Esdale for further information and to schedule your inspection.

Building Size : 54 sqm
View : <https://www.remaxcity.com.au/lease/qld/city-north/grange/commercial/offices/5729295>

RE/MAX
COMMERCIAL

Geoff Esdale
07 3181 8888

<https://www.remaxcity.com.au>