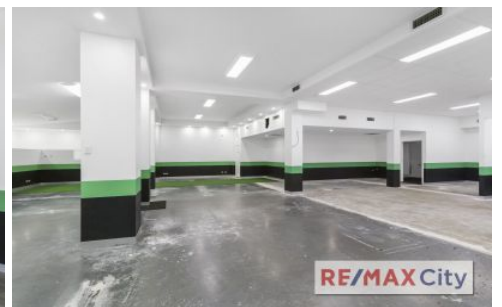
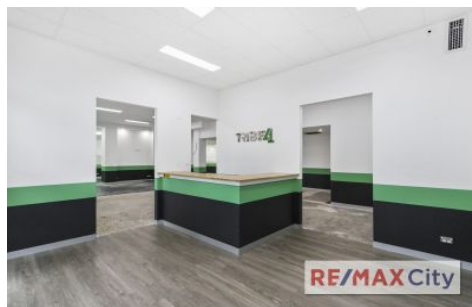


# RE/MAX City



## T1-3/41 Park Road Milton QLD

A desirable city fringe location in the heart of Milton. These tenancies are situated on the ground floor of a building occupied by a variety of established operators.

Previously used as a gym making use of the full 262m<sup>2</sup>, this tenancy can be subdivided into 3 different lots depending on the use. The property would suit a variety of businesses including retailer, medical or professional.

- 239 NLA available (can be subdivided)
- Light and bright open plan space with reception area
- Kitchenette / Air conditioned
- High Ceilings / Large glass frontage
- Amenities including shower
- Outdoor area available for use
- Strong signage opportunity

**View** : <https://www.remaxcity.com.au/lease/qld/city-north/milton/commercial/retail/5729319>

**RE/MAX**  
COMMERCIAL

**Chris Esdale**  
07 3181 8888

**RE/MAX**  
COMMERCIAL

**Geoff Esdale**  
07 3181 8888