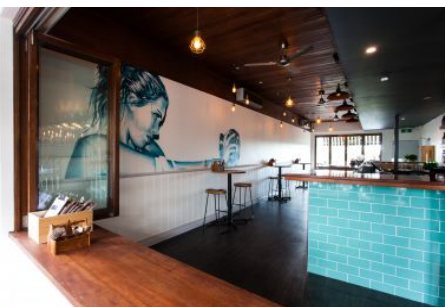


RE/MAX City



208 Given Terrace Paddington QLD

A fully set up restaurant and bar is now available to lease in the heart of Paddington! Located on Given Terrace, this tenancy is surrounded by well-known tenants and is in Paddington's dining precinct with everything set up and ready to go!

- 132m2 NLA plus 60m2 covered deck area
- Grease trap / exhaust / cold room
- Additional lower ground floor storage area of 50m2
- Fixtures and equipment available for purchase at \$50K
- Shared onsite parking
- Neighbouring businesses include: Sasha Drake Boutique, Gnocchi Brothers, Anouk Cafe and more

Metres to Paddo tavern and Suncorp Stadium, the property is only 2kms to Brisbane CBD and benefits local amenities, enjoys easy access to major arterials and public transport.

Building Size : 132 sqm
View : <https://www.remaxcity.com.au/lease/qld/city-north/paddington/commercial/retail/5729321>

RE/MAX
COMMERCIAL

Geoff Esdale
07 3181 8888

RE/MAX
COMMERCIAL

Chris Esdale
07 3181 8888

<https://www.remaxcity.com.au>