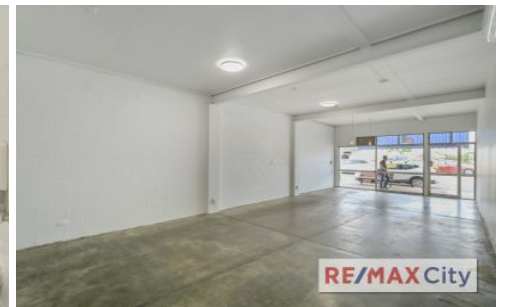


RE/MAX City



639 Wynnum Road Morningside QLD

Set on Wynnum Road in a high profile commercial strip the tenancy represents a very competitively priced opportunity in the heart of Morningside.

- 145m2 NLA Internal + 36m2 outdoor deck
- Open plan space with dual glass frontage
- Partial kitchen fitout
- Amenities with rear access
- Covered back deck
- 4 Car parks at rear

Morningside is located 5kms to the East of the CBD and neighbours the suburbs of Hawthorne, Bulimba and Norman Park. The suburb is well serviced by public transport, schools and amenities. Take advantage of this fast growing and densely populated inner east suburb.

Building Size : 145 sqm
View : <https://www.remaxcity.com.au/lease/qld/inner-south/morningside/commercial/retail/5729323>



Chris Esdale
07 3181 8888

Geoff Esdale
07 3181 8888