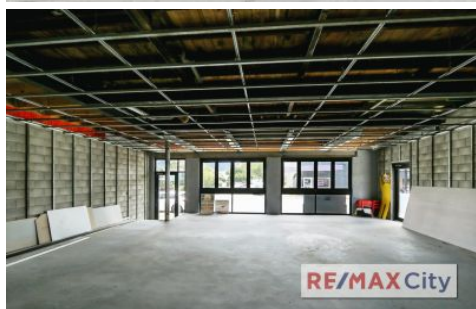


RE/MAX City



290 Hawthorne Road Hawthorne QLD

This brand new development at 290 Hawthorne Road is positioned in a prominent main street location surrounded by popular cafes, businesses and Cineplex Hawthorne. On offer is the perfect opportunity to establish your business in a thriving area.

- Ground Floor - 92m2*
- Minutes from popular Oxford Street
- Prominent location with great street exposure
- Dedicated onsite parking at rear

Please call Exclusive Marketing Agent Chris Esdale for further information and to schedule your inspection.

Building Size : 92 sqm
View : <https://www.remaxcity.com.au/lease/qld/inner-south/hawthorne/commercial/retail/6077007>

RE/MAX
COMMERCIAL

Chris Esdale
07 3181 8888

<https://www.remaxcity.com.au>