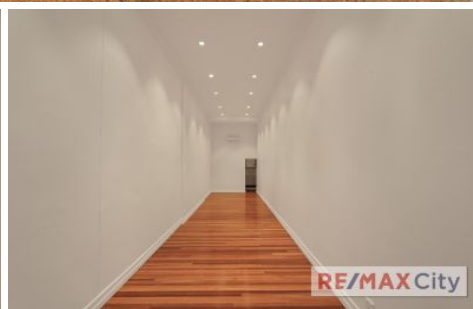


RE/MAX City



Shop 6/158 Adelaide Street Brisbane City QLD

Situated in a prime location on Adelaide Street amongst quality retailers, this shop benefits from high levels of foot traffic. With a glass frontage and high ceilings, the tenancy offers a dominant position within the Brisbane CBD retail precinct.

- 43m² approx. open plan space
- High ceilings with glass frontage
- Polished timber flooring
- Self contained with dedicated bathroom
- Air conditioned
- Dual signage lightboxes for your brand

Located directly across from Queens Plaza, and in close proximity to Anzac Square Arcade and the Queen Street Mall. Surrounded by established businesses, the site offers excellent exposure in a tightly held precinct.

Building Size : 43 sqm
View : <https://www.remaxcity.com.au/lease/qld/city-north/brisbane-city/commercial/retail/6444300>

RE/MAX
COMMERCIAL

Chris Esdale
07 3181 8888

<https://www.remaxcity.com.au>