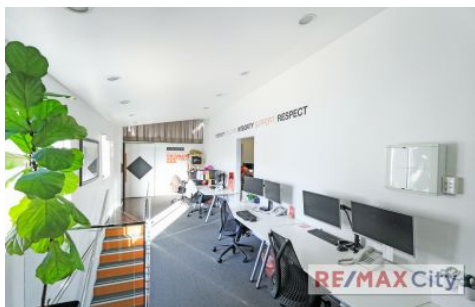


RE/MAX City



237 Given Terrace Paddington QLD

Prominently located on Given Terrace this property allows your business the exposure it needs. Suited an array of retail, professional and service based operators looking for a prime high street position with plenty of car parking.

- * 211m2 in total with 10 car spaces included *
- * Ability to subdivide tenancy to suit from 60m2 *

Ground Floor

- Shop front entry with Reception
- Meeting room connecting entry area
- 2 x Rear open plan office areas
- 2 x Kitchenette & toilet amenities
- Views overlooking Paddington

Lower Level

- Internal access from ground floor

View : <https://www.remaxcity.com.au/lease/qld/city-north/paddington/commercial/retail/6500255>

RE/MAX
COMMERCIAL

Chris Esdale
07 3181 8888

<https://www.remaxcity.com.au>