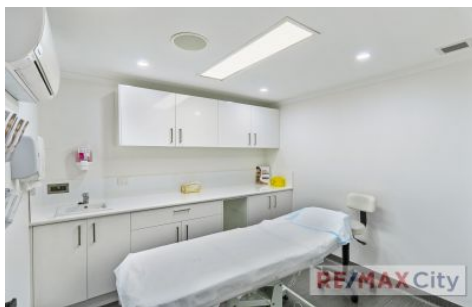


RE/MAX City



21 Godwin Street Bulimba QLD

1 🚗

This beautifully presented ground floor tenancy allows the right operator to take full advantage of the high quality fit out in place.

- 83m2 approx.
- Open plan reception
- 5 consult rooms with sinks
- Dedicated amenities & ducted air conditioning
- 120m to Oxford Street
- 500m to Bulimba Ferry Terminal

Please contact the Exclusive Marketing Agent Chris Esdale for further information and to schedule your inspection.

Building Size : 83 sqm
View : <https://www.remaxcity.com.au/lease/qld/inner-south/bulimba/commercial/healthcare/6954350>

RE/MAX
COMMERCIAL

Chris Esdale
07 3181 8888

<https://www.remaxcity.com.au>