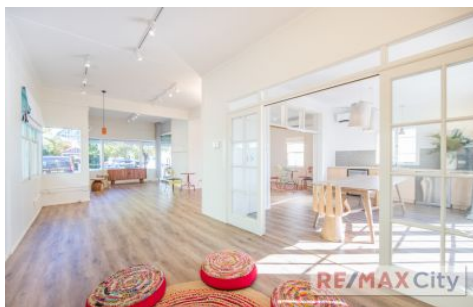


RE/MAX City



139 Latrobe Terrace Paddington QLD

A beautiful ground floor street facing tenancy on Latrobe Terrace is now available for lease to the right operator. Set amongst a popular retail strip, it's a light and bright space with great exposure and charm.

- 98m2 NLA approx.
- Open plan space with front & rear deck
- Kitchenette and bathroom with storage
- Light and bright with high ceilings
- French provincial style sliding doors to separate areas
- Beautiful views over looking Brisbane

Please contact marketing agent Chris Esdale for further information and to schedule your inspection.

Building Size : 98 sqm
View : <https://www.remaxcity.com.au/lease/qld/city-north/paddington/commercial/retail/7616055>



Chris Esdale
07 3181 8888