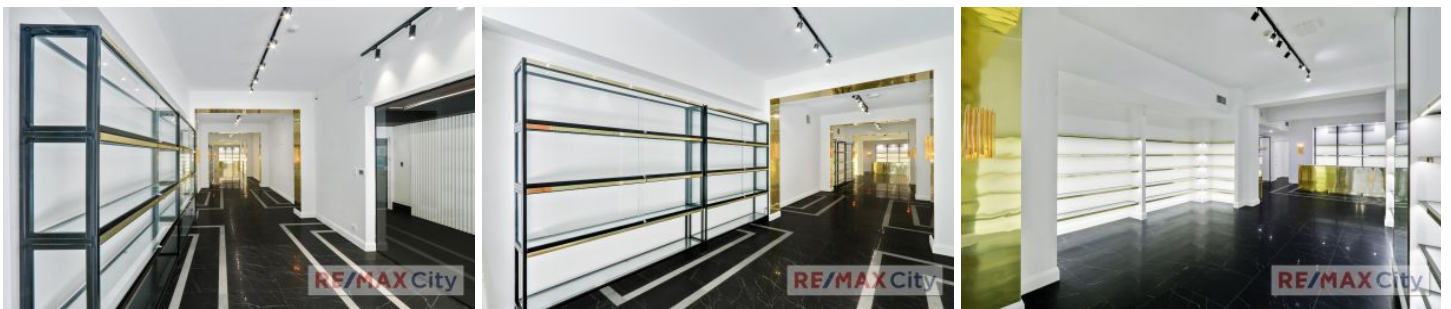


RE/MAX City



Perfectly situated within the prestigious Golden Triangle retail precinct on Edward Street and surrounded by an array of upscale retailers. Among them are distinguished names including Hermes, Canali, Mitchell Ogilvie, Cartier, Hugo Boss and an assortment of other illustrious brands.

- 161m2 NLA with glass shop front
- Signage opportunity offers excellent exposure
- Sleek and modern retail fit out in place
- Consistent high level of foot traffic

Retail shops in this sought-after location do not come up very often, act quickly to secure this premium position in Brisbane's CBD.

Please contact marketing agent Chris Esdale for further information and to schedule your inspection.

Price : Contact Agent
Building Size : 161 sqm
View : <https://www.remaxcity.com.au/lease/qld/city-north/brisbane-city/commercial/retail/7657762>

RE/MAX
COMMERCIAL

Chris Esdale
07 3181 8888

<https://www.remaxcity.com.au>