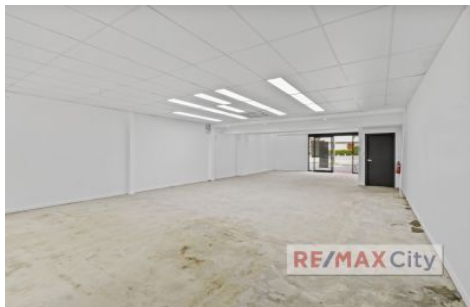


RE/MAX City



Shop 1/59 Hardgrave Road West End QLD

1 🚗

Situated within the Hardgrave Road retail and dining precinct, this shop enjoys a high exposure corner position with plenty of signage options available. Currently operating as a bottle shop, there is an extensive cold room with display fridges installed. This tenancy forms a part of the well known Rialto Building and enjoys outstanding local amenity. Action now to position your business in an iconic location.

- 117m2 NLA
- 1 allocated car park
- Glass shop front
- Awning signage ability
- Ample on-site & street parking
- Air-conditioning

Price : CONTACT AGENT
Building Size : 117 sqm
View : <https://www.remaxcity.com.au/lease/qld/inner-south/west-end/commercial/retail/747208>

RE/MAX
COMMERCIAL

Chris Esdale
07 3181 8888

Please contact the marketing agent Chris Esdale for further

<https://www.remaxcity.com.au>