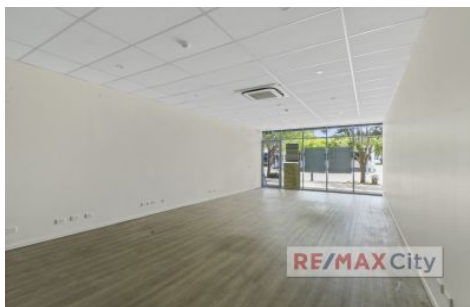


RE/MAX City



104/640 Oxley Road Corinda QLD

Situated at 640 Oxley Road in Corinda, this property boasts a prime location within the bustling retail and office hub of the area. Surrounded by cafes and diverse small businesses, it enjoys a central position in the heart of Corinda's commercial precinct. Just 8.8km southwest of Brisbane's CBD, the suburb offers a well-connected network of amenities, public transport, and a vibrant retail and dining scene. The available space provides a fantastic opportunity to suit investors or owner occupiers.

- 64m2 NLA
- Floor to ceiling glass frontage
- Kitchenette, internal air-conditioning & security system
- Ideal for beauty/retail/office/medical or hospitality
- Outdoor dining available (subject to approval)
- Ability to connect to onsite grease trap
- Available immediately - Join the village now!

Price : ENQUIRE NOW
Building Size : 64 sqm
View : <https://www.remaxcity.com.au/sale/qld/southside/corinda/commercial/retail/7858985>



Chris Esdale
07 3181 8888

<https://www.remaxcity.com.au>