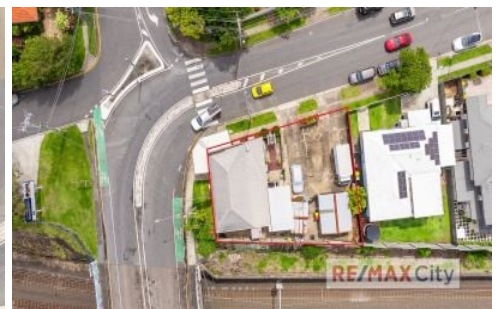


# RE/MAX City



## 373 Bennetts Road Norman Park QLD

4 🚗

RE/MAX City is pleased to present to market 373 Bennetts Road. This property is prominently located allowing easy accessibility, quality exposure to passing traffic and onsite parking allowing business to thrive.

Currently configured as a commercial shopfront with a 3 bedroom residence, this versatile property is a unique offering with the ability to suit a multitude of commercial and residential uses. The property also provides great onsite car parking and external storage sheds.

The size of the shopfront area can be tailored by removing internal walls offering flexibility to meet commercial requirements. The residence consists of 3 bedrooms, kitchen, bathroom and multiple living areas. A floor plan

**Type** : Retail  
**Price** : CONTACT AGENT  
**Building Size** : 179 sqm  
**Land Size** : 425 sqm  
**View** : <https://www.remaxcity.com.au/sale/qld/inner-south/norman-park/commercial/retail/8175721>

**RE/MAX**  
COMMERCIAL

[For full version visit the website](https://www.remaxcity.com.au)

**Chris Esdale**  
07 3494 8888

<https://www.remaxcity.com.au>